



**MONTERREY**

27 - 29 September 2019

**WORLD KARATE FEDERATION**

## Contents

1	Initial Greetings.....	3
1.1	Head of the host NF .....	3
2	Introduction.....	4
2.1	WKF Approved Items .....	4
3	Competition Programme .....	8
4	Site and Date .....	9
5	Competition Venue.....	9
6	Media .....	10
7	Organizer and contacts .....	10
7.1	Organizer contact details .....	10
7.2	Local Organizing Committee.....	10
8	Online Registration.....	11
8.1	Technical Support for Online Registration .....	11
9	Categories .....	12
10	Entry Fee.....	12
10.1	Payment.....	12
11	WKF Accredited Coach .....	12
12	Prizes.....	13
13	Ranking.....	13
14	Ticket for spectators.....	13
15	HQ HOTEL.....	14
16	Visa Requirements .....	19
17	City / Country Information.....	20
18	Omissions .....	21

# 1 Initial Greetings

## 1.1 Head of the host NF

The WKF and the Mexican Karate Federation are honored for the second year to receive WKF K1 Youth League 2019, this time the city of Monterrey Mexico will see in action the best young competitors in the world, Monterrey is undoubtedly one of the cities more cosmopolitan and modern of our country, in which its visitors can enjoy their hospitality, Monterrey will witness the development and growth of the competitors of the future

For what the Organizing Committee WKF and the Mexican Federation of Karate gives them, the best of welcome to this event, wishing the best of luck to its participants, sure that day by day together we build the united karate of Mexico.

Respectfully,



OSCAR GODINEZ BALVAS

President of the Mexican Karate Federation

## 2 Introduction

The Karate 1 – Youth League is a newly created competition conceived to highlight the impact of Karate in young ages.

Established under the umbrella of Karate 1, and designed to complete Karate 1- Premier League and Karate 1-Series A, the Karate 1-Youth League aims at becoming a platform for the development of youngsters in their quest to progress in the sport.

The new competition was devised to respond to the increasing interest of young competitors to have more options to compete at the highest level and it puts the focus on karatekas aged 12 to 17.

The number of competitors is open. All members of WKF are admitted to participate.

The WKF competition Rules in force will be applied.

### 2.1 WKF Approved Items

The Karate 1 - Youth League complies with the highest level of presentation. In order to guarantee the correct delivery of the event, and to ensure the suitable quality of the tournament, exclusively the following brands are WKF Approved for use in the 2018 Karate 1 - Youth League Season.

<b>SPORT PROTECTIONS</b>	
<b>BRAND</b>	<b>CONTACT INFORMATION</b>
	<b>DOUBLE D</b> 2, rue Vladimir Jankelevitch 77184 Emerainville, FRANCE Phone : +33 1 64 73 00 03 Fax : + 33 1 64 73 00 04 E-mail: <a href="mailto:nicolas.poy-tardieu@doubled.fr">nicolas.poy-tardieu@doubled.fr</a> <a href="http://en.doubled-martialarts.com">http://en.doubled-martialarts.com</a>
	<b>ARAWAZA</b> 724, Chemin des Anglais Mascouche (QC) J7L 3R6, CANADA Phone: + 1 450 477 4410 Fax: +1 450 477 4400 E-mail: <a href="mailto:sales@arawaza.com">sales@arawaza.com</a> <a href="http://www.arawaza.com">www.arawaza.com</a>
	<b>SBI SPORT AB</b> Staffanstorpvägen 115 S-23291 Arlöv- Malmö, SWEDEN Tel: +46 40 948888 Fax: +46 40 940780 E-mail: <a href="mailto:robert.tegel@sbisport.se">robert.tegel@sbisport.se</a> <a href="http://www.budo-nord.com">www.budo-nord.com</a>

	<p><b>DAEDO INTERNATIONAL</b>          Botánica 116,          08908 Hospitalet de Llobregat, Barcelona,          SPAIN          Tel: +34 93 454 15 14          Fax: +34 93 453 52 51          E-mail: <a href="mailto:marketing@daedo.com">marketing@daedo.com</a>  <a href="http://www.daedo.com">www.daedo.com</a></p>
	<p><b>BUDOLAND</b>          Am Griebenbach 8          83126 Flintsbach, GERMANY          Phone: +49 (0) 8034 909900          Fax: *49 (0) 8034 9099011          E-mail: <a href="mailto:info@budoland.de">info@budoland.de</a>  <a href="http://www.budoland.com">www.budoland.com</a></p>
	<p><b>SHUREIDO</b>          1-1-6 Tomari, Naha-City          900-0012 – Okinawa, JAPAN          Tel No: +81(98)861 5621          Fax No: +81(98)861 5525          Email: <a href="mailto:shureido@orange.ocn.ne.jp">shureido@orange.ocn.ne.jp</a>  <a href="http://www.shureido-karate.com">www.shureido-karate.com</a></p>
	<p><b>Sports Master Athletic International (SMAI)</b>          96-119 Jardine St,          Fairy Meadow, NSW, 2519, AUSTRALIA          Ph: +61 2 42834363          Fax: +61 2 42855512          E-mail: <a href="mailto:info@smi.com.au">info@smi.com.au</a>  <a href="http://www.smai.com.au">www.smai.com.au</a></p>
	<p><b>TOKAIDO INTERNATIONAL</b>          G/FL., 13 Nanking Street          Yaumatei, Kowloon, HONG KONG          Phone: +49 911 98815 –11          Fax: +49 911 98815 – 99          E-mail: <a href="mailto:Dietmar.Nowak@DAX-Sports.com">Dietmar.Nowak@DAX-Sports.com</a>  <a href="http://www.tokaido.eu">www.tokaido.eu</a></p>
	<p><b>TWIN TOWER ENTERPRISE CORP.</b>          No. 168-13, Chyuan-shin Lii, Shin-huah,          Tainan, TAIWAN          Tel: +886-6-598-2133          Fax: +886-6-597-0840          E-mail: <a href="mailto:twitower@ms43.hinet.net">twitower@ms43.hinet.net</a>  <a href="http://www.wscoku.com">www.wscoku.com</a></p>
	<p><b>WESING</b>          Fujian Weizhixing Sports Goods Co., Ltd.          Binjiang Industrial Park, Xiamei Town, Nan'an          City, Fujian Province 362302, CHINA          Tel: +86-595-2688 9696          Fax: +86-595-8675 6390          E-mail: <a href="mailto:info@wesingsports.com">info@wesingsports.com</a>  <a href="http://www.wesingsports.com">www.wesingsports.com</a></p>

WKF Facemask and Chest Protector for those under 14 years of age are used according to Appendix 10 of the WKF Regulations in force:  
<https://www.wkf.net/pdf/WKFCompetitionRules2018.pdf>

All the information concerning the WKF homologated items for this event can be found on: <https://www.wkf.net/karateprotections/>

<b>TATAMI</b>	
<b>BRAND</b>	<b>CONTACT INFORMATION</b>
	<b>TROCELLEN Italia S.p.A.</b> Via Schiavonesca Nuova 8 31040 Volpago del Montello (TV) Italy Ph: +39 0423 8735 Fax :+39 0423 621434 Email: <a href="mailto:lcodato@trocellen.com">lcodato@trocellen.com</a> <a href="http://www.progame-tatami.com">www.progame-tatami.com</a>
	<b>TATAMIX srlcr</b> Via Don Pedrinelli 48 24030 Carvico (BG) Tel: +39 039 6888492 Fax:+39 035 4362212 Email: <a href="mailto:info@tatamix.it">info@tatamix.it</a> <a href="http://www.tatamix.it">www.tatamix.it</a>
	<b>TAISHAN SPORTS EQUIPMENT Co., Ltd</b> Address:No.8 Tiyuguan Road,Dongcheng District,Beijing,China Phone.: +86-10-84985396 Email: <a href="mailto:wadezhang@taishansports.com">wadezhang@taishansports.com</a> <a href="http://www.taishansports.cn">www.taishansports.cn</a>
	<b>WESING</b> Fujian Weizhixing Sports Goods Co., Ltd. Binjiang Industrial Park, Xiamei Town, Nan'an City, Fujian Province 362302, CHINA Tel: +86-595-2688 9696 Fax: +86-595-8675 6390 E-mail: <a href="mailto:info@wesingsports.com">info@wesingsports.com</a> <a href="http://www.wesingsports.com">www.wesingsports.com</a>
	<b>ISHII CHEMICALS INDUSTRY Co., Ltd.</b> 1-10-8, Ryoke, Kawaguchi-city, Saitama 332-0004 Japan Phone: +81048-223-5148 Fax: +81048-224-3467 E-mail: <a href="mailto:ikk@ishiikasei.co.jp">ikk@ishiikasei.co.jp</a> <a href="http://www.ishiikasei.co.jp/ishiikasei.htm">http://www.ishiikasei.co.jp/ishiikasei.htm</a>

**KARATEGIS WITH THE BRAND EMBROIDERED ON THE SHOULDERS**

The Karategis with the embroidered brand of the manufacturer on the shoulders will be accepted for use in the Youth League by those competitors who wish to do so, both for Kata and Kumite in red or blue colour, depending if the competitor is AKA or AO.

The authorized brands to use these karategi models are:

**ADIDAS – ARAWAZA – BUDO NORD – DAEDO – HAYASHI  
SHUREIDO – SMAI – TOKAIDO – WACOKU - WESING**

### 3 Competition Programme

DAY / HOUR	HOTEL FIESTA AMERICANA MONTERREY PABELLON M
Friday 9:00-17:00	Registration and Weigh - In
Friday 15:00-16:30	Referee meeting
Friday 18:00-19: 00	Accredited Coach Briefing
Friday 19:00- 20:00	Coach Meeting +Draw
DAY / HOUR	SPORTS HALL: GIMNASIO NUEVO LEÓN
Saturday 8:00-20:00	Competition days*
Sunday 9:00-20:30	Competition days*

\*The detailed competition schedule will be fixed after closing the online registration in order to adequate it to the final number of athletes.



## 4 Site and Date

**Date:** Registration Sept 27<sup>th</sup>, 2019  
Competition Sept 28<sup>th</sup> and 29<sup>th</sup>, 2019  
**Place:** City Of Monterrey, México  
**Starting Time:** 8:00 a 17:00

Registration : **HOTEL FIESTA AMERICANA MONTERREY PABELLON M**

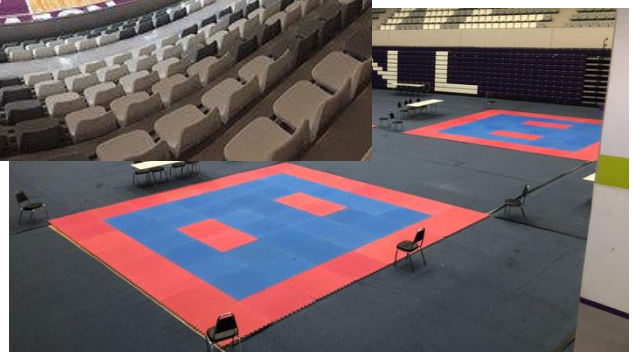
ADDRESS Av. Benito Juárez 1102 Col. Centro 64000 Monterrey, Nuevo León, Mexico

## 5 Competition Venue

**Venue:** Gimnasio Nuevo León .-

**Address:**  Av. Ruiz Cortines y Gonzalitos s/n Col. Urdiales. CP 64430. Monterrey, Nuevo León, México.

It has a main court of staves, fixed and retractable stands with capacity for 3,500 spectators, an adjacent court of the same material, two rooms, a lobby, ground floor and two floors of offices, underground parking, toilets, snack and loading area and discharge.



This Karate 1 – Youth League event will be performed on Tatamix, WKF Approved tatami.

## 6 Media

Press accreditation can only be given to professional journalists working for a media and having proof of their credentials.

Media professionals can register to request press accreditations through the online registration form which can be found here: [https://www.sportdata.org/wkf/set-online/veranstaltung\\_info\\_main.php?active\\_menu=calendar&vern=275&ver\\_info\\_act=ion=nennhead#a\\_eventtheadend](https://www.sportdata.org/wkf/set-online/veranstaltung_info_main.php?active_menu=calendar&vern=275&ver_info_act=ion=nennhead#a_eventtheadend)

### **Video recording will not be allowed**

Should you need more information about press or media related issues, please contact directly the World Karate Federation's office: [press@wkf.net](mailto:press@wkf.net).

## 7 Organizer and contacts

### 7.1 Organizer contact details

Technical organizer is Mexican Karate Federation



Address: Comité Olímpico Mexicano, Av. del Conscripto & Anillo Periférico, Lomas de Sotelo, M. Hidalgo, 11200 Ciudad de México, CDMX

E-mail: [femeka@prodigy.net.mx](mailto:femeka@prodigy.net.mx)

Tel: +52 7771800190 (Whatsapp)



### 7.2 Local Organizing Committee

	<p>Mr. Jesús Roberto Rodríguez Tamez Competition Director</p> <p>Mexican Karate Federation</p>	<p><a href="mailto:churdz@hotmail.com">churdz@hotmail.com</a></p> <p>+521 8180180291</p>
	<p>Mss. Samantha Desciderio Event logistika</p>	<p><a href="mailto:lic_samantha@hotmail.com">lic_samantha@hotmail.com</a></p> <p>+521 777 1800190</p>

## 8 Online Registration

All competitors, referees, coaches and media representatives must be registered online using the online platform:

[https://www.sportdata.org/wkf/set-online/veranstaltung\\_info\\_main.php?active\\_menu=calendar&vernr=275#a\\_eventhead](https://www.sportdata.org/wkf/set-online/veranstaltung_info_main.php?active_menu=calendar&vernr=275#a_eventhead)

No onsite registration will be accepted. The registration will be validated once completed the online payment through the payment platform. In case of any questions concerning the online registration please directly contact the Sportdata software team via the email address [office@sportdata.org](mailto:office@sportdata.org).

Individuals and National Federations are responsible for the quality of the entered registration data. Once close the online registration, any comments will have to notified to the software and to the WKF at latest five day before the first day of competition.

### 8.1 Technical Support for Online Registration

[https://www.sportdata.org/wkf/set-online/index.php?active\\_menu=home](https://www.sportdata.org/wkf/set-online/index.php?active_menu=home)

Email: [karate1@sportdata.org](mailto:karate1@sportdata.org)

The official registration session will take place on **HOTEL FIESTA AMERICANA MONTERREY PABELLON M** on 27 September 2019 from 8:00 to 17:00

If changes are required during the official registration session because of incorrect, or missing registration data, a fee of € 20 is charged for each change.

At registration, accreditation cards will be issued with the participants main data, a photograph and information about registered categories. The accreditation card must be worn at all times during the event.

**Only members of national federations recognized by WKF are admitted to participate, as per Youth League Organising Rules 2019 (PL OR Point 6 Registration.)**

[https://www.wkf.net/pdf/rules/WKF%20Youth%20League\\_Organizing%20Rules\\_%202019.pdf-eng.pdf](https://www.wkf.net/pdf/rules/WKF%20Youth%20League_Organizing%20Rules_%202019.pdf-eng.pdf)

**All participants must submit an official document (passport or other valid ID card) for the WKF identification and validation at the accreditation session.**

**The accreditation of any competitor must be done by the athlete or the athlete's coach, in person bringing the athlete passport or other valid ID at the accreditation session.**

**The competitor who has not collected, either personally or through his/her coach the accreditation during the official registration, will not be included in the draw.**

The weighing will be carried out immediately after receiving the accreditation, those athletes who will not attend the weighing will not be included in the draw.

## 9 Categories

### **Junior (16-17 years old): 11 categories (9 Kumite + 2 Kata)**

- Female Kumite: -48kg, -53kg, -59kg, +59kg
- Male Kumite: -55kg, -61kg, -68kg, -76kg, +76kg
- Kata: Female, Male

### **Cadet (14-15 years old): 10 categories (8 Kumite + 2 Kata)**

- Female Kumite: -47kg, -54kg, +54kg
- Male Kumite: -52kg, -57kg, -63kg, -70kg, +70kg
- Kata: Female, Male

### **Under 14 (12-13): 10 categories (8 Kumite + 2 Kata)**

- Female Kumite: -42kg, -47kg, +47kg
- Male Kumite: -40kg, -45kg, -50kg, -55kg, +55kg
- Kata: Female, Male

## 10 Entry Fee

The entry fees are € 40 per individual category entry.

### 10.1 Payment

All payments must be process through the online payment platform. No onsite payment will be accepted. If you have any problems with payment, please contact Mexican Karate Federation on email: femeka@prodigy.net.mx

## 11 WKF Accredited Coach

According to the Coach License Manual, the minimum level required to take part in the Karate 1 events is the “**Accredited Coach**” level.

According to the Coach License Manual, the minimum level required to take part in the Karate 1 events is the “**Accredited Coach**” level. To obtain such certification, coaches must attend a compulsory **Coach Briefing**. Therefore, and in order to give the opportunity to the WKF Coaches to get this certification, a **Coach Briefing** will be held in all events of the Youth League Season 2019.

## 11 WKF Accredited Coach Briefing,

Please find below the Coach schedule and the details for the registration process:

DAY / HOUR	COACH BRIEFING
FRIDAY, 27 <sup>th</sup> From 18:00 to 19:00	HOTEL FIESTA AMERICANA MONTERREY PABELLON M

### Registration (only online)

Those coaches who wish to attend to the “Accredited Coach Briefing” must be registered online and must fill out the “Accreditation Agreement for Coaches” that can be downloaded from the online registration site.

All coach registrations must be made online latest until September 13 2019, through the following link:

[https://www.sportdata.org/wkf/set-online/veranstaltung\\_info\\_main.php?active\\_menu=calendar&vern=339#a\\_eventhead](https://www.sportdata.org/wkf/set-online/veranstaltung_info_main.php?active_menu=calendar&vern=339#a_eventhead)

Should you have any difficulties when registering, please contact support@sportsid.org for technical support.

### Fees and payment

We would like to remind you that the fee to attend to the “Coach Briefing” and to obtain a new license or to renew your expired license of WKF Accredited Coach is 300 CHF.

All payments must be made through Sportdata platform.

## 12 Prizes

The event prizes (medals and trophies) are to be provided by the host.

In each individual category the first prize will be a gold medal.

The second prize will be a silver medal. The third prizes will be bronze medals.

## 13 Ranking

Competitors can earn ranking points in every Karate1 event according to the official WKF Ranking Regulations. Competitor U14 do not earn ranking points:

[https://www.wkf.net/pdf/rules/UPDATED\\_WKF%20World%20Ranking%20Rules%202019\\_May2019.pdf-eng.pdf](https://www.wkf.net/pdf/rules/UPDATED_WKF%20World%20Ranking%20Rules%202019_May2019.pdf-eng.pdf)

## 14 Ticket for spectators

The ticket categories and prices are:

The entrance to Youth League Monterrey 2019 is free for all



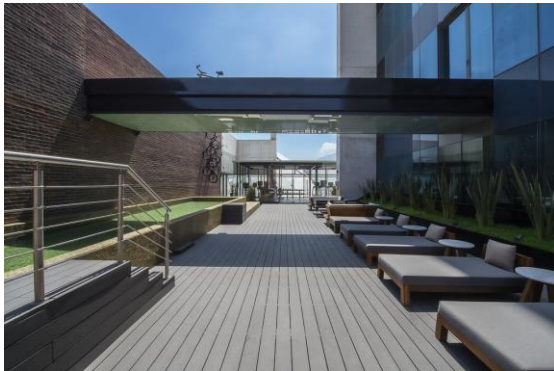
## 15 HQ HOTEL

### Fiesta Americana Monterrey Pabellón M

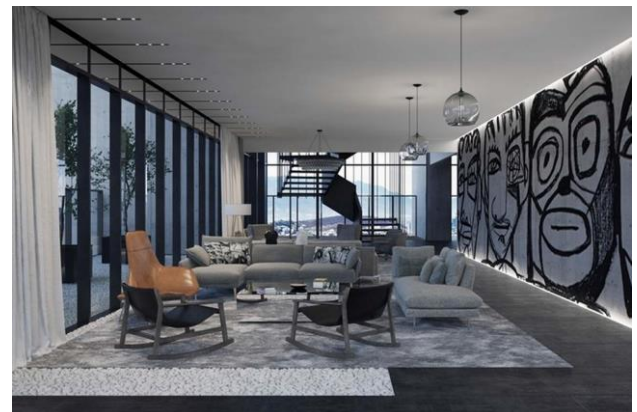


**ADDRESS** Av. Benito Juárez  
1102 Col. Centro 64000  
Monterrey, Nuevo León, Mexico

Our hotel is located just steps away from the city center. Enjoy a wonderful and successful stay in a state-of-the-art hotel with friendly service that is sure to make you feel at home.



ROOM	PRICE PER ROOM PER NIGHT
Single or Double	130 USD



Rate per room, per night, based on occupancy indicated **IN EUROPEAN PLAN WITHOUT FOOD**

 <http://www.fiestamericana.com/es/groups>

 018005045000

**CODE FOR RESERVATIONS .- GIE8R5**

BLANCA BETZAIDA GRANADOS HONORATOS

#### LIST OF OFFICAL HOTELS

- 1.- Fiesta Americana Monterrey Pabellón.
- 2.- Courtyard by Marriott.
- 3.- Kristal Monterrey Centro
- 4.- Kristal Monterrey San Jerónimo

## COURTYARD BY MARRIOTT



**Address: Av. San Jerónimo 1012, San Jerónimo, 64640 Monterrey, N.L.**

Our facilities are in the higher growth commercial and industrial area, offering everything needed to make your stay successfully and enjoyable at Courtyard by Marriott Monterrey San Jeronimo/Valle with the best service for the business traveler, outdoor pool, Gym , Lobby Bar and Restaurant Courtyard Cafe with room service and wireless Internet in all rooms. Smoke-Free hotel located in southwest of Monterrey city on the San Jerónimo Avenue.

**COURTYARD<sup>®</sup>**  
BY MARRIOTT  
MONTERREY SAN JERÓNIMO/VALLE



ROOM	PRICE PER ROOM PER NIGHT
Single or Double	81 USD
Triple	87 USD

- Wireless Internet in all areas of the hotel
- 24 hour business center.
- Pool and gym.
- Emergency Medical Service (24 hours).
- American Buffet Breakfast (egg, beans, seasonal fruit, juices, sweet bread, coffee, cereal)

 [reservacionesmtysj@hotelesoptima.com](mailto:reservacionesmtysj@hotelesoptima.com)



CODE FOR RESERVATIONS .- **KARATE**

BANK.- BANAMEX INTERBANKABLE KEY.- 002580011771093002 ACCOUNT.- 7109300 SUCURSAL.- 0117

## KRISTAL MONTERREY CENTRO



Address: Corregidora 519, Centro, 64000  
Monterrey, N.L.



### Property Location

With a stay at Krystal Monterrey in Monterrey (Monterrey Centro), you'll be minutes from Museo Metropolitano de la Ciudad de Monterrey and Faro de Comercio. This hotel is within close proximity of Casino Monterrey and Metropolitan Cathedral of Our Lady of Monterrey.



ROOM	PRICE PER ROOM PER NIGHT
Single or Double	84 USD
Triple or quadruple	84 USD

Rate per room, per night, based on occupancy indicated **IN EUROPEAN PLAN**  
WITHOUT FOOD

✉ [reservaciones.kumty@krystal-hotels.com](mailto:reservaciones.kumty@krystal-hotels.com)

☎ 018005797825

CODE FOR RESERVATIONS .-



## KRISTAL MONTERREY SAN JERÓNIMO



Address: Antonio L. Rodríguez # 1880 Pte. Col. Santa María



This hotel is located on Highway 40, a 6-minute walk from Unity Bridge, which crosses the Santa Catarina River, and 5 km from the 18th-century Bishop's Palace. The Museum of Contemporary Art of Monterrey with exhibitions is located 10 km from the place. Offers Wi-Fi, flat screen TV, air conditioning and balcony. Room service is available 24 hours a day, every day. Amenities include free parking, an indoor pool, a casual restaurant, a lobby bar, a spa and a gym.



ROOM	PRICE PER ROOM PER NIGHT
Single or Double	75 USD
Triple	87 USD

✉ [reservaciones.kumty@krystal-hotels.com](mailto:reservaciones.kumty@krystal-hotels.com)

☎ 018005797825

CODE FOR RESERVATIONS .- KAR

BANK.- SANTANDER INTERBANKABLE KEY.- 014180655015032780 ACCOUNT.- 65501503278

### INFORMATION.-

GERARDO CASTILLO GARCÍA.- DIRECTOR DE CONGRESO Y CONVENCIONES Y EXPOSICIONES

✉ [gcastillo@aikaeventos.com](mailto:gcastillo@aikaeventos.com)



**🚌 GROUND TRANSPORTATION.** - All transportation prices will be for the whole event.

60 USD por person.

Payment methods / Bank transfer

If you wish to pay for your reservation by bank transfer, you need to pay the required amount within 24 hours from the time of reservation, or at time you receive confirmation of availability from our operators. At the same time, the guest is obliged to send Mexican Karate Federation a confirmation of the payment. In contrary, Mexican Karate Federation is not obligated to carry out the service of the reservation.

Mexican Karate Federation is not responsible for outstanding reservations of services caused by not receiving the confirmation within 24 hours (except for Saturdays, Sundays and holidays). All bank costs are to be paid by the client (when making the bank transfer payment client must put on "Detail of charge"). All reservations not paid in full will not be considered valid. The bank transfer is not available if the beginning of Your stay is within 5 working days for payments from abroad, or 3 working days for payments by bank transfer within México. For all additional information feel free to contact us.

THE NAME OF THE BANK IS **BANORTE**  
 BENEFICIARY: **FEDERACION MEXICANA DE KARATE Y ARTES MARCIALES**  
**AFINES A..C.**

CLABE: **072 180 0041 8346 5856**

ADDRESS.- Av de las Fuentes 184, Lomas de Tecamachalco, 53950 Naucalpan de Juárez, México

If you have any more questions or concerns please let us know.

in case of requiring ground transportation you must send the following data to [femeka@prodigy.net.mx](mailto:femeka@prodigy.net.mx)

NATIONAL FEDERATION	
CONTACT PERSON	
E-MAIL	
PHONE NUMBER (WHATS APP)	
HOTEL	
NUMBER OF PEOPLE	

**ARRIVAL IN MONTERREY, NUEVO LEÓN, MEXICO**

ARRIVAL DATE	
ARRIVAL TIME	
FLIGHT NUMBER	
AIRLINE	
NUMBER OF PEOPLE	
DESTINATION HOTEL	

## DEPARTURE FROM MONTERREY, NUEVO LEÓN, MEXICO

DEPARTURE DATE	
DEPARTURE TIME	
FLIGHT NUMBER	
AIRLINE	
NUMBER OF PEOPLE	
DEPARTURE HOTEL	

## 16 Visa Requirements

### VISA and Travel documents

Please check the website of the Secretary of Foreign Relations

<https://www.gob.mx/sre/> to see if you are required to have a Mexican visa when entering Mexico.

<http://www.sectur.gob.mx/guia-de-viaje/visa/>

<https://www.gob.mx/cms/uploads/attachment/file/8932/visasordinarios.pdf>

<https://www.gob.mx/sre/acciones-y-programas/visas-para-extranjeros-8036>

### Countries that require a visa

<https://www.inm.gob.mx/gobmx/word/index.php/paises-requieren-visa-para-mexico/>

### Countries that do not require a visa

<https://www.inm.gob.mx/gobmx/word/index.php/paises-no-requieren-visa-para-mexico/>

How to apply for a Mexican visa?  
visit the following link

<https://embamex.sre.gob.mx/ecuador/index.php/servicios-consulares/26-servicios-para-extranjeros/331-requisitos-para-solicitud-de-visa>

The list of embassies and consulates of Mexico is available on the website

<https://www.gob.mx/sre/acciones-y-programas/representaciones-de-mexico-en-el-exterior>

If you need a specific invitation letter, ONLY AFTER YOU HAVE COMPLETED YOUR REGISTRATION ONLINE, please contact us via email at: [femeka@prodigy.net.mx](mailto:femeka@prodigy.net.mx), tel:+52 1 777 180 0190

## 17 City / Country Information

Monterrey (/, mɒntəˈreɪ/;[5] Spanish pronunciation: [monteˈrei] is the capital and largest city of the northeastern state of Nuevo León, Mexico.[4] The city is anchor to the Monterrey metropolitan area, the second most productive in Mexico and the third largest with an estimated population of 4,689,601 people as of 2015.

The uninterrupted settlement of Monterrey was founded by Diego de Montemayor in 1596. In the years after the Mexican War of Independence, Monterrey became an important business center. With the establishment of Fundidora Monterrey, the city has experienced great industrial growth.



It has a great culture and history. The city has been developing over the years and today it is a very important business, industrial and economic center. It is rich in spectacular landscapes, green areas and historical monuments. There are many places that you will love such as El Cerro de la Silla, El Cerro de las Mitras, La Sierra Madre, where you can find its mountainous landscapes, thermal springs and numerous museums. In addition, Conarte bookstore is considered one of the most beautiful on earth according to the Wired magazine.

Do not forget to walk around the ancient neighborhood dating from the 18th century; it is formed by old houses and some of its important streets are stone paved. The attractions in the surroundings of the city of Monterrey are so many and so varied that always, irremediably, you will find yourself wanting to come back for more; especially those who love adventure and frantic pace.

<https://www.youtube.com/watch?v=Dm8BfbFAqHg>

[https://www.youtube.com/watch?v=c8L\\_bnpByN4](https://www.youtube.com/watch?v=c8L_bnpByN4)

[https://play.google.com/store/apps/details?id=com.turismonl.pasaportenle&hl=en\\_US](https://play.google.com/store/apps/details?id=com.turismonl.pasaportenle&hl=en_US)

## 18 Omissions

As regards that the specific items are not expressly foreseen in the present bulletin reference is to be made to the general rules and guidelines contained in WKF Regulations.